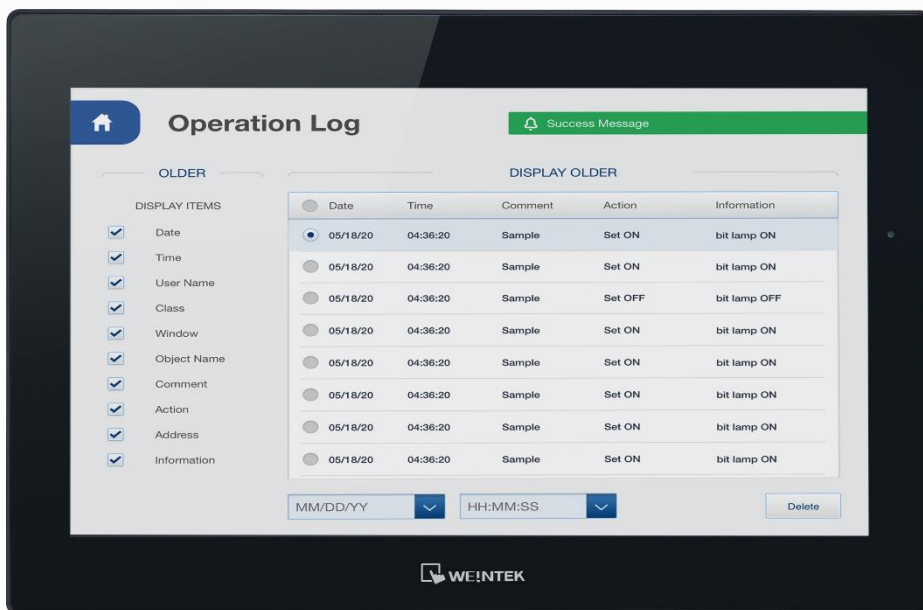


cMT2166X

15.6" WVA Standard HMI



CE  IP66 NEMA4

Key Features

- ▶ The oTP integrated touch solution offers an edge-to-edge design, high-resolution and high-transmittance
- ▶ 15.6" 1920 × 1080 LCD
- ▶ Tempered glass capacitive touch panel
- ▶ COM port × 2, Ethernet port × 1, USB host port × 1
- ▶ Built-in 4 GB FLASH and 1 GB RAM
- ▶ Fan-less cooling system

Technical Specifications

Display

| | |
|---------------------------------|--------------------------------|
| Display | 15.6" Wide Viewing Angle (WVA) |
| Resolution | 1920 × 1080 |
| Brightness (cd/m ²) | 300 |
| Contrast Ratio | 800:1 |
| Backlight Life Time | > 30,000 hrs. |
| Colors | 16.2 M |
| LCD Viewing Angle (T/B/L/R) | 89/89/89/89 |
| Pixel Pitch (mm) | 0.17925 (H) × 0.17925 (V) |

Touch Panel

| | |
|----------------|---------------------------------|
| Type | Tempered Glass, Capacitive Type |
| Hardness Scale | 7H |

Memory

| | |
|-------|------|
| FLASH | 4 GB |
| RAM | 1 GB |

Processor

| | |
|-----|----------------|
| CPU | Quad-core RISC |
|-----|----------------|

I/O Port

| | |
|-----------------------|--|
| Memory Card Type | N/A |
| USB Host | USB 2.0 × 1 |
| Ethernet | 10/100 Base-T × 1 |
| COM Port | Con.A: COM1 RS-485 2W/4W, COM3 RS-485 2W Con.B: COM1 RS-232 4W, COM3 RS-232 2W* |
| WiFi | N/A |
| RS-485 Dual Isolation | N/A |
| CAN Bus | N/A |
| Audio Output | Built-in Mono Speaker |

* Only Tx & Rx (no RTS/CTS) may be used for COM1 RS-232 when COM3 RS-232 is also used.

Power

| | |
|----------------------|-------------------------|
| Input Power | 24 ± 20 % VDC |
| Power Isolation | Built-in |
| Power Consumption | 900 mA @ 24 VDC |
| Voltage Resistance | 500 VAC (1 min.) |
| Isolation Resistance | Exceed 50 MΩ at 500 VDC |

Mechanical

| | |
|------------------|--|
| Enclosure | Front Bezel: Plastic, Rear Enclosure: Aluminum |
| Dimensions W×H×D | 400 × 263 × 27.6 mm |
| Panel Cutout | 384 × 247 mm |
| Weight | Approx. 1.6 kg |

| | |
|-------|--------------------------------------|
| Mount | Panel Mount, VESA Mount 100 × 100 mm |
|-------|--------------------------------------|

Environment

| | |
|-----------------------|---|
| PCB Coating | Yes |
| Protection Structure | NEMA4 / IP66 Compliant Front Panel |
| Storage Temperature | -20° ~ 60°C (-4° ~ 140°F) |
| Operating Temperature | 0° ~ 50°C (32° ~ 122°F) |
| Relative Humidity | 10 % ~ 90 % (non-condensing) |
| Altitude | 3,000 m |
| Vibration Endurance | 10 to 25 Hz (X, Y, Z direction 2G 30 minutes) |

Certificate

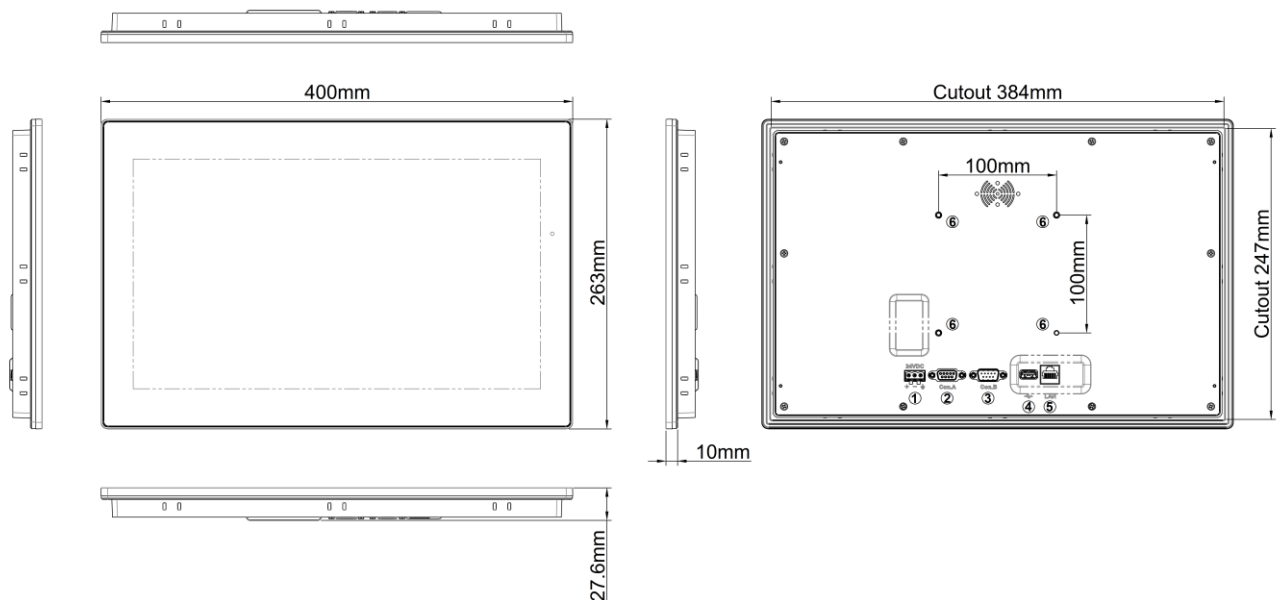
| | |
|----|-----------|
| CE | CE Marked |
|----|-----------|

Software

| | |
|-----------------|---|
| EasyBuilder Pro | V6.06.02 or later versions* |
| Weincloud | EasyAccess 2.0 (Optional), Dashboard (Optional) |

* The minimum software requirement for MPI: EasyBuilder Pro V6.07.02

Dimensions



| | |
|----------|--|
| 1 | Power Connector |
| 2 | Con.A: COM1 RS-485 2W/4W, COM3 RS-485 2W |
| 3 | Con.B: COM1 RS-232 4W, COM3 RS-232 2W |

| | |
|----------|-------------------------|
| 4 | USB Host |
| 5 | LAN |
| 6 | VESA 100 mm Screw Holes |

Pin Assignment

Con.B: 9 Pin, D-sub, Male

| PIN# | COM1 [RS232]4W | COM3 [RS232]2W |
|------|-------------------|-------------------|
| 1 | | |
| 2 | RxD | |
| 3 | TxD | |
| 4 | | |
| 5 | GND | |
| 6 | | |
| 7 | RTS | TxD |
| 8 | CTS | RxD |
| 9 | GND | |

Con.A: 9 Pin, D-sub, Female

| PIN# | COM1 [RS485]2W | COM1 [RS485]4W | COM3 [RS485]2W |
|------|-------------------|-------------------|-------------------|
| 1 | Data- | Rx- | |
| 2 | Data+ | Rx+ | |
| 3 | | Tx- | |
| 4 | | Tx+ | |
| 5 | GND | | |
| 6 | | | Data- |
| 7 | | | |
| 8 | | | |
| 9 | | | Data+ |

Part Number

【cMT2166X】

15.6" 1920 × 1080 WVA LCD HMI, Built-in 4 GB FLASH / 1 GB RAM

Optional:

RZACEA020: EasyAccess 2.0 Activation Card