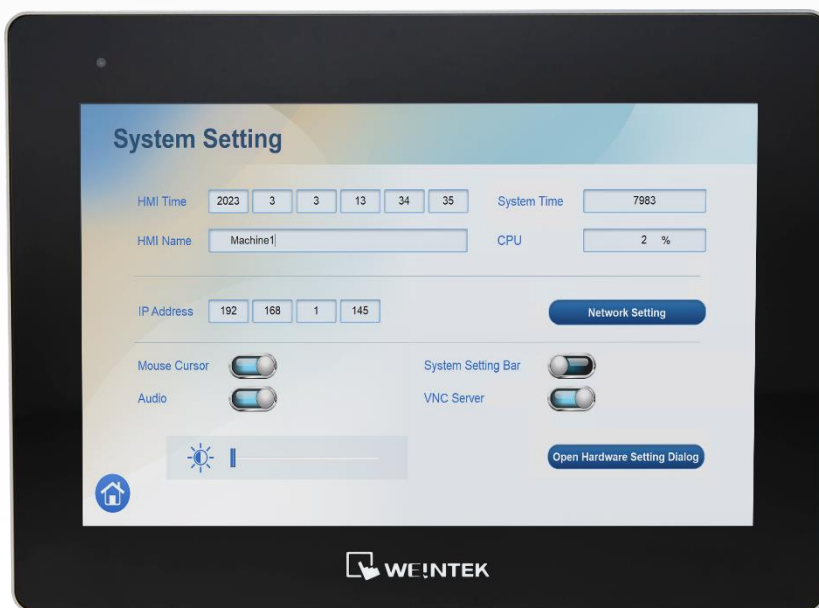


cMT3108XP

10.1" WVA Advanced HMI



IP66 NEMA4

Key Features

- ▶ Compatible with M02 WiFi Expansion Module that supports wireless communication
- ▶ 10.1" 1280 × 800 LCD
- ▶ Tempered glass capacitive touch panel
- ▶ COM port × 3, Ethernet port × 2, USB host port × 1
- ▶ Built-in 4 GB FLASH and 1 GB RAM
- ▶ Fan-less cooling system

Technical Specifications

Display

Display	10.1" Wide Viewing Angle (WVA)
Resolution	1280 × 800
Brightness (cd/m ²)	425
Contrast Ratio	800:1
Backlight Life Time	> 50,000 hrs.
Colors	16.7 M
LCD Viewing Angle (T/B/L/R)	89/89/89/89
Pixel Pitch (mm)	0.1695 (H) × 0.1695 (V)

Touch Panel

Type	Tempered Glass, Capacitive Type
Hardness Scale	7H

Memory

FLASH	4 GB
RAM	1 GB

Processor

CPU	Quad-core RISC
-----	----------------

I/O Port

Memory Card Type	N/A
USB Host	USB 2.0 × 1
Ethernet	LAN 1: 10/100/1000 Base-T × 1 LAN 2: 10/100 Base-T × 1
COM Port	Con.A: COM2 RS-485 2W/4W, COM3 RS-485 2W, CAN Bus Con.B: COM1 RS-232 4W, COM3 RS-232 2W*
WiFi	M02 WiFi Expansion Module (Optional)
RS-485 Dual Isolation	N/A
CAN Bus	Yes
Audio Output	Built-in Mono Speaker

* Only Tx & Rx (no RTS/CTS) may be used for COM1 RS-232 when COM3 RS-232 is also used.

Power

Input Power	24 ± 20 % VDC
Power Isolation	Built-in
Power Consumption	700 mA @ 24 VDC
Voltage Resistance	500 VAC (1 min.)
Isolation Resistance	Exceed 50 MΩ at 500 VDC

Mechanical

Enclosure	Plastic
Dimensions W×H×D	266 × 196 × 42.7 mm
Panel Cutout	255 × 185 mm

Weight	Approx. 1.1 kg
Mount	Panel Mount, VESA Mount 75 × 75 mm

Environment

PCB Coating	Yes
Protection Structure	UL Type 4X (indoor use only) / NEMA4 / IP66 Compliant Front Panel
Storage Temperature	-20° ~ 60°C (-4° ~ 140°F)
Operating Temperature	0° ~ 55°C (32° ~ 131°F)
Relative Humidity	10 % ~ 90 % (non-condensing)
Altitude	3,000 m
Vibration Endurance	10 to 25 Hz (X, Y, Z direction 2G 30 minutes)

Certificate

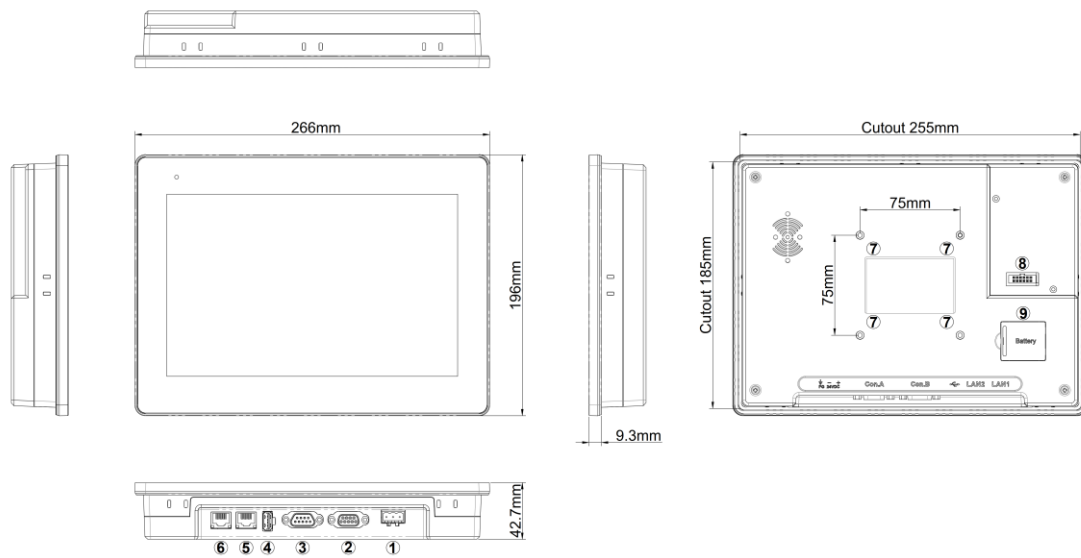
CE	CE Marked
ATEX	ATEX Zone 2/22 Category 3 G/D
UL	cULus Listed

Software

EasyBuilder Pro	V6.08.01 or later versions
Weincloud	EasyAccess 2.0 (Optional), Dashboard (Optional)
CODESYS®	Optional

* CODESYS® is a trademark of CODESYS GmbH.

Dimensions



1	Power Connector	6	LAN 1
2	Con.A: COM2 RS-485 2W/4W, COM3 RS-485 2W, CAN Bus	7	VESA 75 mm Screw Holes
3	Con.B: COM1 RS-232 4W, COM3 RS-232 2W	8	Expansion Module Connector
4	USB Host	9	Battery
5	LAN 2		

Pin Assignment

Con.B: 9 Pin, D-sub, Male

PIN#	COM1 [RS232]4W	COM3 [RS232]2W
1		
2	RxD	
3	TxD	
4		
5	GND	
6		
7	RTS	TxD
8	CTS	RxD
9	GND	

Con.A: 9 Pin, D-sub, Female

PIN#	COM2 [RS485]2W	COM2 [RS485]4W	COM3 [RS485]2W	CAN Bus
1	Data-	Rx-		
2	Data+	Rx+		
3		Tx-		
4		Tx+		
5	GND			
6			Data-	
7				CAN_L
8				CAN_H
9			Data+	

Part Number

【cMT3108XP】

10.1" 1280 × 800 WVA LCD HMI, Built-in 4 GB FLASH / 1 GB RAM

【RZUSK7010】 (included in package)

USB Clamp & Tying Strap

Optional:

M02: WiFi Expansion Module

RZACEA020: EasyAccess 2.0 Activation Card